



Knockhall
Primary School

SEND INFORMATION

Ignite the spark, reveal the champion



CONTENTS

- What is SEND?
- Raising concerns
- Process to receive support
- Consent
- EIT
- External agencies
- DLA
- EHCP - Parental request





What are the main areas of SEND?



Communication and Interaction

Specific Learning Difficulties (SPLD) e.g dyslexia, dyscalculia, Moderate Learning Difficulties (MLD), Severe Learning Difficulties (SLD), Profound and Multiple Learning Difficulty (PMLD).



Cognition and learning

Speech, Language and Communication Needs (SLCN) and Autistic Spectrum Disorder (ASD).



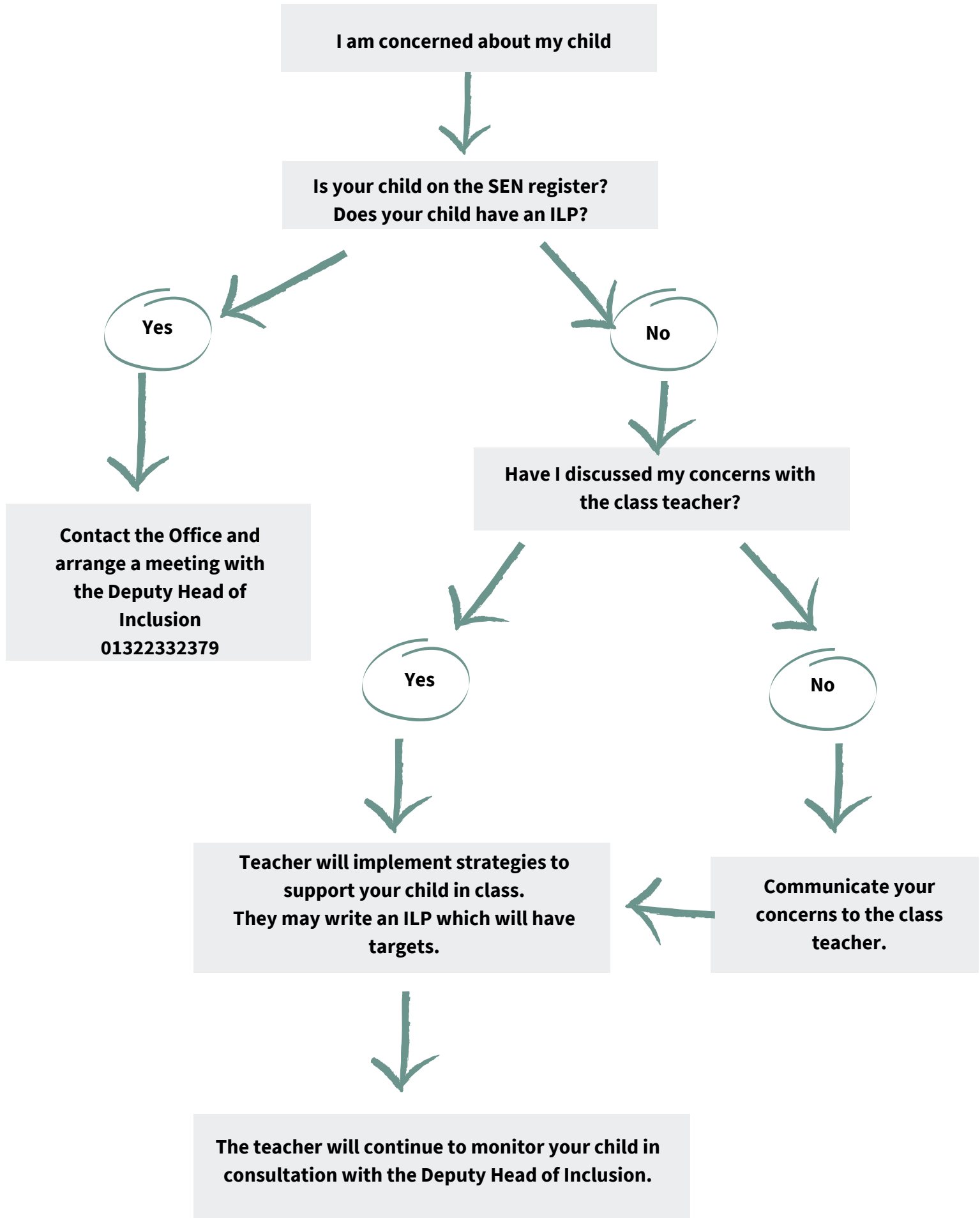
Sensory and/or Physical needs

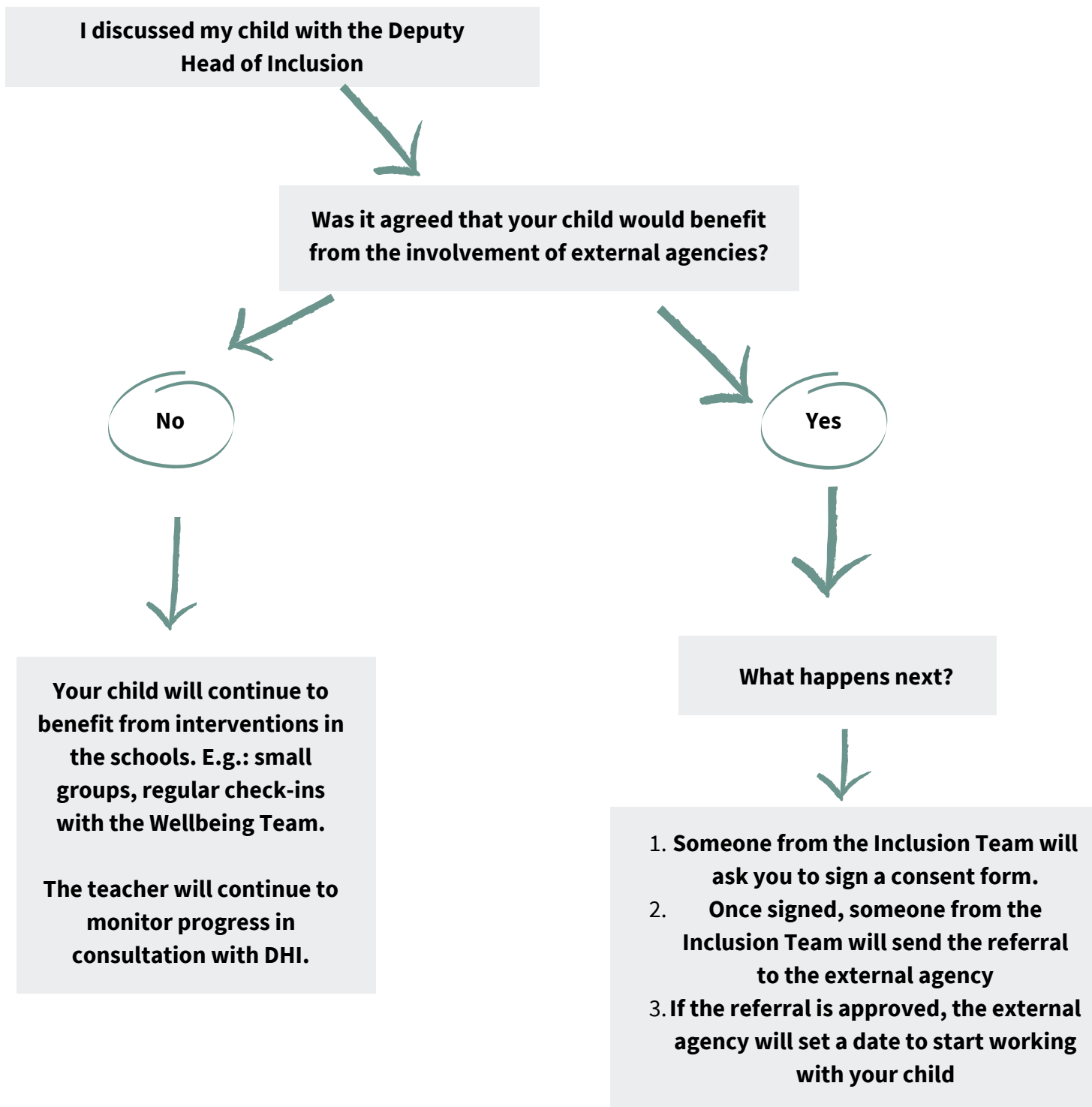
Visual Impairment (VI), Hearing Impairment (HI), Multi-sensory Impairment (MSI) and Physical Disability (PD).



Social, Emotional and Mental Emotional Health

Depression, Attention Deficit Hyperactivity Disorder (ADHD), Eating disorders, Anxiety Disorders, Mental Health issues, and Social disorders.





The majority of external agencies inform the parents about their child's progress periodically, but if you haven't received any update contact the School Office with your request. Someone from the Inclusion Team will try to respond your query as soon as possible.

Consent



Someone from the Inclusion Team will ask you to sign specific forms for your children to receive support from the Local Inclusion Forum (LIFT) or Educational Psychologist (EP) or specific external agencies.



What happens if I don't give consent?

You are free to refuse consent or remove consent at any point. This will not affect in any way the access that you have to other NHS services and external agencies. However Paediatric, Educational Psychologist and SEMH Partner referrals will not happen.



What does it mean if I give my consent for the school to discuss my child?

Consultations between external agencies and schools are confidential. By giving consent for the school to discuss your child with external agencies, you are also giving consent for external agencies to record and assess your child's needs on their internal systems.

Early Intervention Team



The Local Inclusion Forum Team (LIFT) is a multi-disciplinary service who works with Kent schools supporting children aged 3 to 18 who need extra help to thrive in school. Sometimes meetings with adults who know the child, observations, assessments or one to one work with the child. We can also signpost schools to additional services for children and their families where it is thought helpful.



1 →

Educational Psychologists (EPs) - undertake detailed consultation and assessments of children in the context of school, to explore any difficulties with learning the child or young person may be having, as well as identifying strengths.

2 →

Specialist Teaching and Learning Service (STLS) - is a teacher who can support school staff with early identification of learning needs for students where schools are uncertain of how to best support progress.

3 →

NHS Health Team - They offer suggestions around any physical or medical needs/requirements that may be available to the child/family.

4 →

SENCO's - cluster SENCO's attend to support each other with possible ideas/interventions/strategies that they may have used with a child presenting similarly to yours.



Community Paediatrics Service



A team of specialist children's doctors who work closely with other professionals in health and other agencies. They see children with a variety of medical conditions that may have an impact on their development and learning.



Child and Adolescent Mental Health Services (CAMHS) - Provides mental health assessment and treatment services to children, young people and their families/carers living in the borough of Bexley. It also provides advice, consultation and support to the other individuals and agencies involved in children's care.



We are Beams - A local charity that supports disabled children and their families in Kent. Providing comprehensive support services to disabled children and their families. They aim to support the whole family through a range of services that directly benefit and assist those dealing with the challenges of raising a disabled child.



IASK - Give free, impartial and confidential information, advice and support about special educational needs and disabilities (SEND) for children, young people up to age 25, parents and carers.



External agencies



STLS - Our Specialist Teaching and Learning Services (STLS) provide education support services for children and young people (0 to 19 years) with sensory and physical disabilities, or complex needs.



NHS Mental Health Support Team Mental Health Support Teams (MHSTs) are a new government initiative to help increase children and young people's access to support for emotional wellbeing and mental health. MHSTs are part of the national Children and Young People's Increasing Access to Psychological Therapies (CYP-IAPT) programme.



Hearing and Visual Team - Support with eye and ear health care



DLA

Disability Living Allowance (DLA) - DLA is a social security benefit in the United Kingdom paid to eligible claimants who have personal care and/or mobility needs as a result of a mental or physical disability. It is tax-free, non-means-tested and non-contributory.

DLA for children may help with the extra costs of looking after a child who:

- is under 16
- has difficulties walking or needs much more looking after than a child of the same age who does not have a disability



How to claim

To claim DLA for a child you need to be their parent or look after them as if you're their parent. This includes step-parents, guardians, grandparents, foster-parents or older brothers or sisters.

If your child currently lives in England or Wales you can apply by either:

- printing off and filling in the DLA claim form
- phoning the Disability Living Allowance helpline and asking for a printed form

Disability Living Allowance helpline

Telephone: 0800 121 4600

Textphone: 0800 121 4523

Relay UK (if you cannot hear or speak on the phone): 18001 then 0800 121 4600

British Sign Language (BSL) video relay service if you're on a computer - find out how to use the service on mobile or tablet Monday to Friday, 9am to 5pm



St Mary Greenhithe

The Rectory 131 Mounts Road, Greenhithe DA9 9ND

01322 382031





EHCP - Parental request

**Parent contacts KCC SEND Team. KCC send parent paperwork and school appendix 2
School complete appendix 2 and attach all relevant reports/documents on file.**



Complete EHCP Parent/Carer and Professionals Request Form
**To help you complete the request form, gather as much evidence as you can about
your child/young person. This can include reports from professionals who have
assessed or supported them. For example:**

- Educational Psychologist (EP)**
- Specialist Advisory Services**
- Speech & Language / Occupational Therapy**
- Community Paediatrics**
- Hearing/Visual Impairment Services**
- Child & Adolescent Mental Health Service (CAMHS)**
- Early Years Advisor/Portage/BEAS**



**Email EHCP Parent/Carer and Professionals Request Form to case worker who emails
the school**

Support to complete the EHCP application

**If you need further information or do not understand any of the questions, you can contact the
KCC SEND Team**
Telephone - 01622
Email:



**You can download the 'EHC Needs Assessment Parent/Carer Prompt Toolkit' or request a copy to
the SENCO.**

Knockhall Primary School, Eynsford Road, Greenhithe, Kent DA9 9RF
www.knockhallprimaryschool.co.uk



Knockhall Primary School



Woodland
Academy Trust