



# KNOCKHALL PRIMARY NEWSLETTER

## Dear Families

There have been concerns raised by several families regarding car users along Eynsford Road. We have had several reports of cars mounting pavements, reversing without looking, and speeding which has resulted in some incidents where children and adults have almost been hit. This is a huge safety concern. I have spoken to our Chair of Local Academy Committee who is organising a meeting with the local council to see what they can do to ensure the safety of our community. In the meantime, please continue to report any incidents to the school and where possible contact Kent Council to report your concerns. If you bring your child to school by car then please be mindful of the road restrictions that are currently in place. We all have a responsibility to always ensure the safety of children and adults.

If you have visited our office over the past couple of days, you will have seen a lovely new board welcoming you into Knockhall Primary School. The board now has the photographs of our staff team. Thank you to the office team for working hard on this display. We are proud of our staff team, and we have waited a long time to celebrate them using a lovely bespoke board. Pop in and take a look!

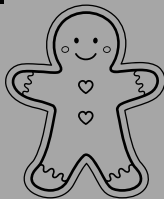
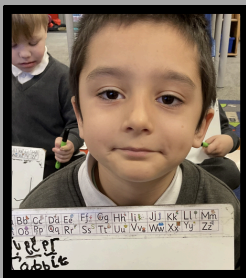
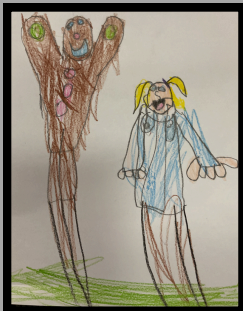
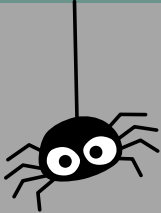
Thank you to everyone who continues to engage with our Home Learning package. Magma Maths is proving a hit and many children continue to use TTRS and Reading Plus. If you would like any help in accessing our Home Learning Package then please first go to our website, the link is below or speak to your child's class teacher who can support you. It is lovely to see the impact on children's learning when they engage with homework.

<https://www.knockhallprimaryschool.co.uk/virtual-office/homework/>

Have a lovely weekend Miss Yiannadji and the Knockhall Team.

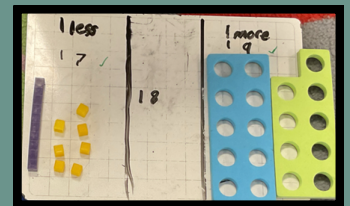
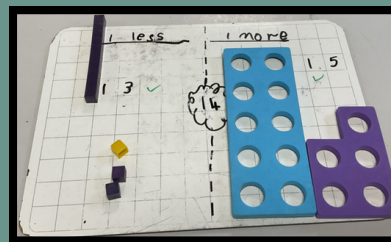
## EYFS

Reception have had a fantastic week immersed in the story 'The Gingerbread Man'. They have been busy drawing the characters from the story and enjoyed watching their pictures turn into animations. They have also been using their phonics knowledge to write longer words in Phonics. We are super 'proud' of their effort and attitude to learning. Nursery have been enjoying learning to sing the Nursery rhyme 'The Incy Wincy Spider' and practising their counting skills. How many legs does a spider have?



## KS1

This week in maths we have continued to develop our place value knowledge within 20, including learning how to find and represent one more and one less than a given number with manipulatives. We also enjoyed using Magma Maths to show all that we have learnt in this unit. We were even able to go back and check answers and correct them if we needed to. Well done Year 1 maths superstars!



## LKS2

**Volcano**

Where are the most volcanoes located?  
Along a belt called the ring of fire the encircles the Pacific ocean

How are volcanoes formed? When one tectonic plate moves under another

Why do volcanoes erupt? When enough magma builds up in the magma chamber it forces its way up to the surface and erupts

This week Year 3 have been enjoying learning about the features of volcanoes, they created leaflets about volcanoes.

**Volcanoes**

Where are most volcanoes located?  
Ring of fire  
Indian plates  
Pacific ocean

How are volcanoes formed?  
Volcanoes are formed when a tectonic plate slides on the another tectonic plate

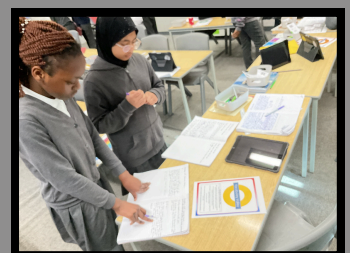
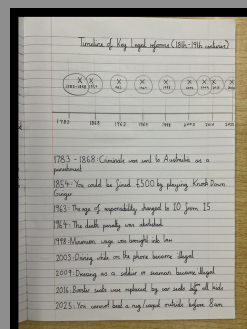
Why do volcanoes erupt?  
Volcanoes erupt when enough magma builds up in the magma chamber forcing it way up to the surface causing it to erupt



## UKS2

Year 6 Explore the Evolution of Laws

In Humanities this week, Year 6 delved into the Rule of Law, investigating how laws evolve over time and their impact on society. Through careful research, they explored the reasons behind key legal reforms and how societal changes drive these developments. To showcase their learning, they created detailed two-page fact files and interactive timelines, tracing the journey of specific laws from their origins to the present day. A fantastic effort from all our budding legal historians!







### Who Has Received a Golden Ticket This Week!



- Nursery -Esme
- Reception -Kiddus,Awesome
- Year 1-Talia,Gina
- Year 2 -Ronny,Sapphire,
- Year 3-Marya,Tamanna,
- Year 4-Darcy,Karol
- Year 5 -Connor,Noah,Amanda
- Year 6 -Goodness,Yashika,Michael

### Sports Classes of the week

- KS1 - Falcons
- KS2 - Parrots

### ATTENDANCE

- Ducklings -91.3%
- Owlets-86.7%
- Cygnets -89.5%
- Owls -90.1%
- Swans -92.8%
- Flamingos -95.1%
- Falcons -98.5%
- Hummingbirds-98.4%
- Kingfishers -83.3%
- Robins -89.4%
- Kestrels -99.2%
- Woodpeckers -92.6%
- Pelicans -97.1%
- Penguins -95.1%
- Puffins-92.1%
- Parrots-90.5%
- Peacocks -93.7%
- Eagles -96.6%
- Minimum School Target - 96%
- Whole School attendance - 93.8%

### Knockhall Values Champions!!!

- Ducklings -Rea
- Owlets-Hassan
- Cygnets-Robyn
- Swans-Gina
- Owls -Munachi
- Flamingos -Rian
- Kingfishers-Isaiah
- Falcons -Callum
- Hummingbirds -Diran
- Robins -Shivaniya
- Woodpeckers -Alfred
- Kestrels -Alex
- Penguins-Alexis
- Pelicans-Tim
- Puffins-Andre
- Peacocks-Aryan
- Parrots-Max
- Eagles-Scarlett



### Dear Families,

To ensure the safety of all our children, we kindly ask that parents accompany their KS1 children, to their designated lines in the morning, rather than allowing them to walk through the gates alone. Please use the correct gates for drop-off to help us manage the flow of children safely and efficiently. If allowing a KS1 child to walk alone, the KS1 gate is much closer to their class registration lines. Thank you for your cooperation in keeping our school a safe environment for everyone.

### Urgent Safety Reminder

Please do not mount the curb to drive around cars during drop-off and pick-up times. We understand the road can be very busy, and you may feel the need to get off quickly, but we cannot compromise children's safety. Many families walk to school, and it's crucial that we prioritise their and others' safety.

Thank you for your cooperation in keeping our school community safe.



[Click Here for Family Courses and Workshops](#)

# Information for Families

## IMPORTANT Safeguarding Children's inappropriate phone usage.



Get Ready for Our Exciting Half-Term Camp at Knockhall Primary School! Looking for an action-packed holiday experience for your child? Our 2-day Holiday Camp is the perfect place to keep kids active, social, and engaged in a fun-filled environment!

Activities galore: From sports to games, your child will have a blast staying active and learning new skills. Our range of activities mean we cater for all ages and interests.

Who's it for? Children in Year Reception through to Year 9

Expert Coaches: Led by Mr. Sam MacNeil, our PE Sports Coach at Knockhall Primary School, with 15 years of sports experience and 10 years working with schools!

Safety First: Our staff are fully DBS checked and first aid trained.

Dates: Monday 17th & Tuesday 18th February  
Times: 8:30am - 4:30pm

Location: Knockhall Primary School, Eynsford Road, Greenhithe, DA9 9RF

Pricing: £20 per day  
Sibling discount: £16 per day

Don't miss out on this fun and energetic camp! Book your child's spot today and let them make the most of their half-term holidays. Just bring a packed lunch and a refillable drink bottle with suitable clothing for indoor and outdoor play.

Sign up now!  
[https://docs.google.com/forms/d/e/1FAIpQLSdQr3o7dhUxP7C2TqkCzO4nSnW\\_dB2i0YyrwWkz-30CFRHbQ/viewform?usp=dialog](https://docs.google.com/forms/d/e/1FAIpQLSdQr3o7dhUxP7C2TqkCzO4nSnW_dB2i0YyrwWkz-30CFRHbQ/viewform?usp=dialog)  
Let's make this half-term unforgettable! 😊



**BOOK TODAY - STSPORTSLTD@GMAIL.COM**

**MONDAY 17TH & TUESDAY 18TH FEBRUARY**

**ST SPORTS LTD**

**FEBRUARY HALF TERM**

**WHY CHOOSE ST? >>>>**

- 8.30am till 4.30pm
- Suitable for Year Reception to Year 9
- Football & Multisport Activities
- Led by experienced teaching staff
- Secure indoor/outdoor facilities
- Activity Zone and crafts available meaning we cater for all interests

**£20.00 PER DAY**  
SIBLING DISCOUNT £16.00

Knockhall Primary School, Eynsford Road, Kent, DA9 9RF

### What Parents & Carers Need to Know About WHATSAPP

16+ in UK & EU: 12+ rest of world

WhatsApp is the world's most popular messaging service, with around two billion users exchanging texts, photos, videos and documents, and making voice and video calls. The app offers end-to-end encryption, meaning messages can only be read by the sender and the recipient(s). Not even WhatsApp can read them. Updates to its privacy policy in 2021 reportedly caused millions of users to leave the app. But the new policy was widely misinterpreted: it only related to WhatsApp's business features, not to personal messages.

**Prize Scams**  
WhatsApp users occasionally receive messages from unrecognised third parties or fraudulent pages that offer prizes - encouraging recipients to click a link to win. A scammer's goal is to steal your account information. WhatsApp subscriptions have run out, aiming to disguise their intent. Other actions include instructions to forward a message to earn a gift or reward.

**Enabling Fake News**  
WhatsApp has unfortunately been linked to accelerating the spread of dangerous rumours, as individuals outside of their close circles were reported to have been spooked by false allegations shared on the app. WhatsApp has taken steps to prevent this, such as suspending accounts in the early weeks of the Covid-19 pandemic.

**Connections with Strangers**  
To start a WhatsApp chat, you need the mobile number of the person you want to message (they also need to have their phone number linked to their account). WhatsApp can also detect the address books on someone's device and recommend which of their contacts to add. If you're not sure who they are, you can check if someone they don't know, that person could then use it to get in touch via WhatsApp.

**Ephemeral Messaging**  
By enabling the 'disappearing messages' option in a chat, users can send messages that will vanish from WhatsApp after seven days. Parents may want to take note of this new feature, which makes monitoring what children are talking about on the app problematic. Equally, if someone sends your child an inappropriate message, since it has disappeared there is no way to prove any wrongdoing.

**Group Chats and Cyberbullying**  
Group chats and video calls are great for connecting with multiple people in WhatsApp, but there is always the potential for someone's feelings to be hurt by an unkind comment or joke. The 'only admin' feature gives the WhatsApp admin of a group control over who can send messages. They can, for example, block people from posting in a chat, which could make a child feel excluded and upset.

**Live Location Sharing**  
The 'live location' feature lets users share their current whereabouts, allowing friends to see their movements in real time. This can be useful for parents to see where their children are, but it's important to be clear that people know where you are. Instead, it's useful for friends to see where you are. If you're not sure who they are, you can check if someone they don't know, that person could then use it to get in touch via WhatsApp.

**Advice for Parents & Carers**

**Report Potential Scams**  
Advise your child not to engage with any message that looks suspicious or too good to be true. When your child receives a message from an unknown number for the first time, they will be given the option to report it. They can also report a contact or a group spam by tapping on the contact or group name to see their profile and reporting it to WhatsApp.

**Create a Safe Profile**  
Even though someone would need your child's phone number to add them as a contact, it's a good idea to make your child's profile settings as private as possible. WhatsApp can also detect the address books on someone's device and recommend which of their contacts to add. If you're not sure who they are, you can check if someone they don't know, that person could then use it to get in touch via WhatsApp.

**Use Location Features Sparingly**  
If your child needs to use live location to show you or their friends where they are, advise them to share their location only for the time they need it. WhatsApp gives the location options of 15 minutes, one hour or eight hours. However, your child can manually choose to stop sharing their location at any time.

**Fact-Check Messages**  
You can have fact-check messages that have been forwarded at least five times in WhatsApp, by double-tapping the magnifying glass icon to the right of the message. From there, your child can launch a Google search and decide themselves whether the message was accurate or not. It's a good way to encourage young people to question things they see online.

**Meet Our Expert**  
We've teamed up to create a new report card digital media component which is personalised about improving digital literacy for parents and children. She has extensive experience in the social media world and has worked at sites to check a safe message that helps parents and children better in a digital world.

**National Online Safety**  
#WakeUpWednesday

www.nationalonlinesafety.com @nationalonlinesafety

## PTFA valentines event

13th Feb

£1

Buy A Rose and card for someone you love

**Family 'Food and Fun' event**  
**11am - 1pm.**

**Monday 17th February 2025 - Manor School Swanscombe**  
**Thursday 20th February 2025 - Stone St Mary's School**  
**Friday 21st February 2025 - St Mary Greenhithe Church Hall**

All children must be accompanied by a responsible adult.

Supported by **ASDA Foundation**

Please state names of children/ adults and any allergies.

Please sign up for this free event so we can ensure everyone is catered for.  
To book email : [jude@mckcharity.co.uk](mailto:jude@mckcharity.co.uk) or call 07512 460221.



# Dates For Your Diary



**Friday 7th February**- Year 4 Bluewater Nature Trail

**Thursday 13th February**- Last day of Term

**Monday 24th February**- First day of Term



If you would like to raise anything with us, please contact us via the school office [KHPoffice@watschools.org.uk](mailto:KHPoffice@watschools.org.uk)